

## ADVANCED STRETCH PANTS



Advanced stretch trousers with many tool pockets for craftsmen who require high functionality. The trousers have outside kneepad pockets in HTPA Dobby and 4-way stretch zones for perfect fit, high comfort and mobility.

Reinforced fly and stretch zones in crotch. Side pockets. Left cargo pocket with flap, concealed D-ring and strap for ID-pocket, mobile phone pocket with stretch zone. Right cargo pocket with

multiple tool pockets and ruler pocket. Kneepad pockets in HTPA Dobby. 4-way stretch around knee, in seat and on back of legs. Back pockets. Reinforced back hem in HTPA Dobby with reflective detail. Adjustable foot width with plastic press studs.

**SKU:** 112240 | **Categories:** [Stretch](#), [Trousers](#) |

### VARIATIONS

Image	SKU	Price	Description	Colour	Size
	11224007146			Black	c146
	11224007148			Black	c148

Image	SKU	Price Description	Colour	Size
	11224007150		Black	c150
	11224007152		Black	c152
	11224007154		Black	c154

Image	SKU	Price Description	Colour	Size
	11224007156		Black	c156
	1122400744		Black	c44
	1122400746		Black	c46

Image	SKU	Price Description	Colour	Size
	1122400748		Black	c48
	1122400750		Black	c50
	1122400752		Black	c52

Image	SKU	Price Description	Colour	Size
	1122400754		Black	c54
	1122400756		Black	c56
	1122400758		Black	c58

Image	SKU	Price Description	Colour	Size
	1122400760		Black	c60
	1122400762		Black	c62
	1122400764		Black	c64



Image	SKU	Price Description	Colour	Size
	11224007100		Black	d100
	11224007104		Black	d104
	11224007108		Black	d108




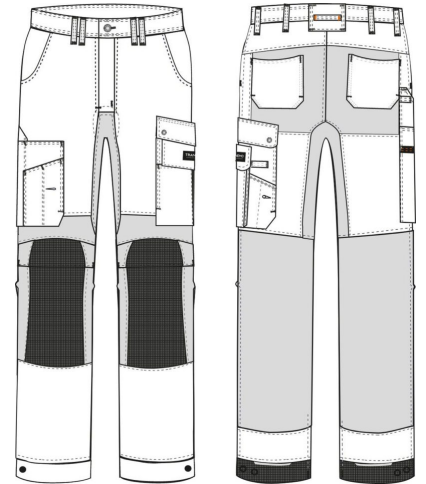
Image	SKU	Price Description	Colour	Size
	11224007112		Black	d112
	11224007116		Black	d116
	11224007120		Black	d120

Image	SKU	Price Description	Colour	Size
	1122400780		Black	d80
	1122400784		Black	d84
	1122400788		Black	d88

Image	SKU	Price Description	Colour	Size
	1122400792		Black	d92
	1122400796		Black	d96

**GALLERY IMAGES**



## PRODUCT DESCRIPTION

### QUALITY

400: 65% polyester / 35% cotton, 245 g/m<sup>2</sup>

Cotton/polyester twill, with high comfort level and excellent washing characteristics. The cloth is durable, highly colour-fast and wrinkle resistant. Quick drying. PFAS-free.

Test result fabric.

### WASHING INSTRUCTIONS



## **ADDITIONAL INFORMATION**

**Colour**

Black

**Size**

c146, c148, c150, c152, c154, c156, c44, c46, c48, c50, c52, c54,  
c56, c58, c60, c62, c64, d100, d104, d108, d112, d116, d120,  
d80, d84, d88, d92, d96

## **PRODUCT FILES**

No files for this product.

